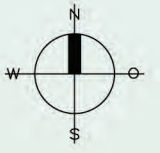
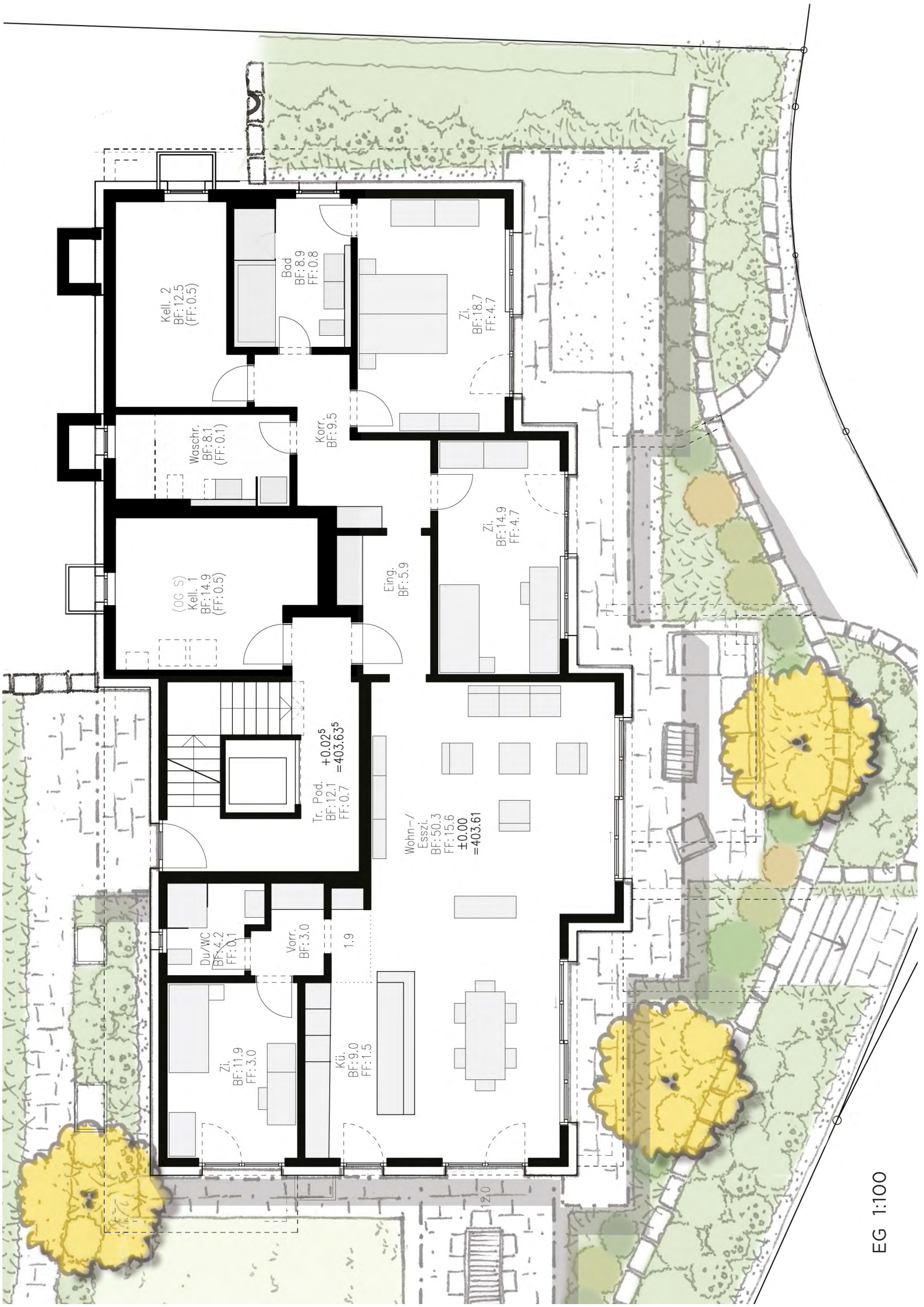


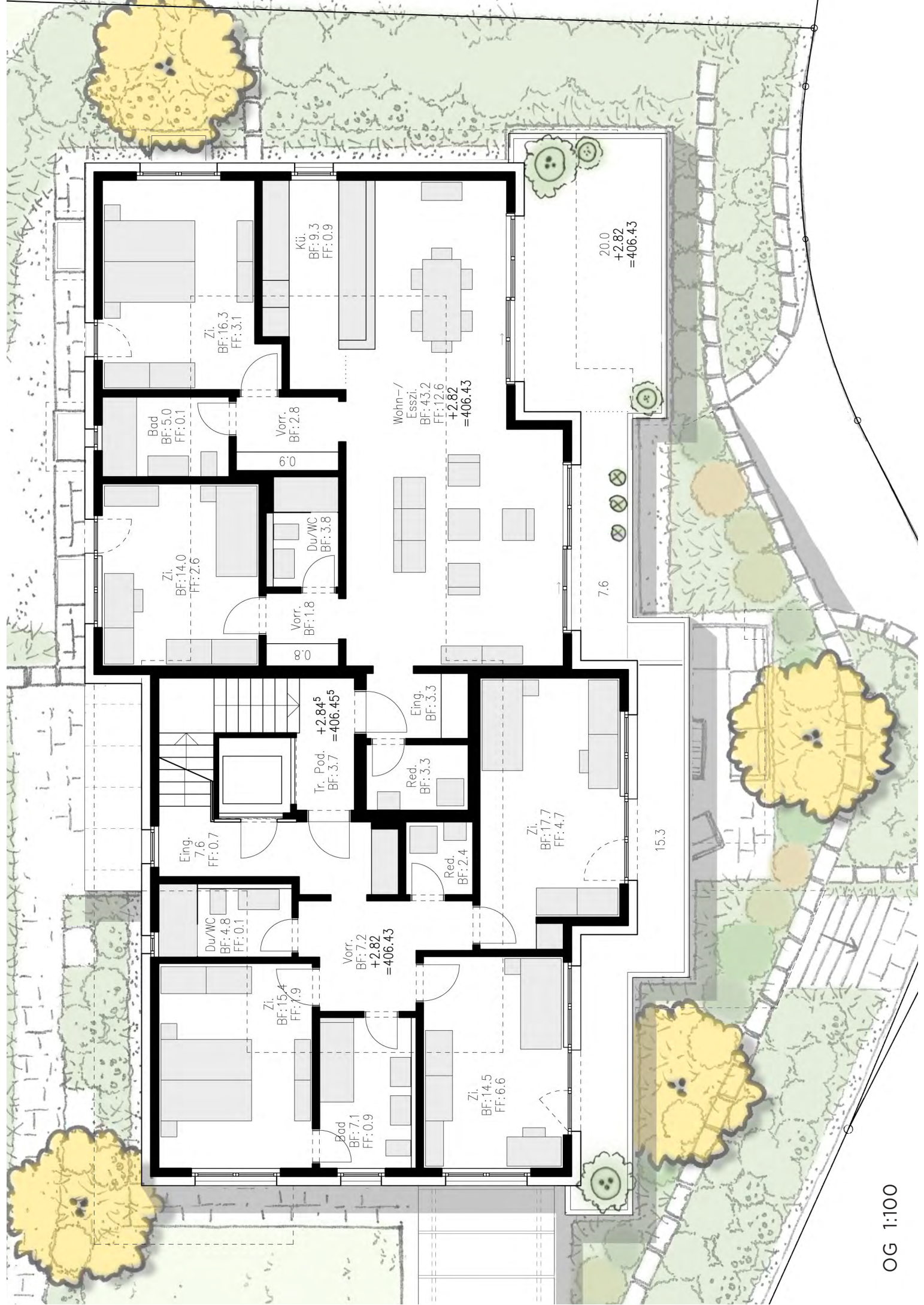
waldliebe

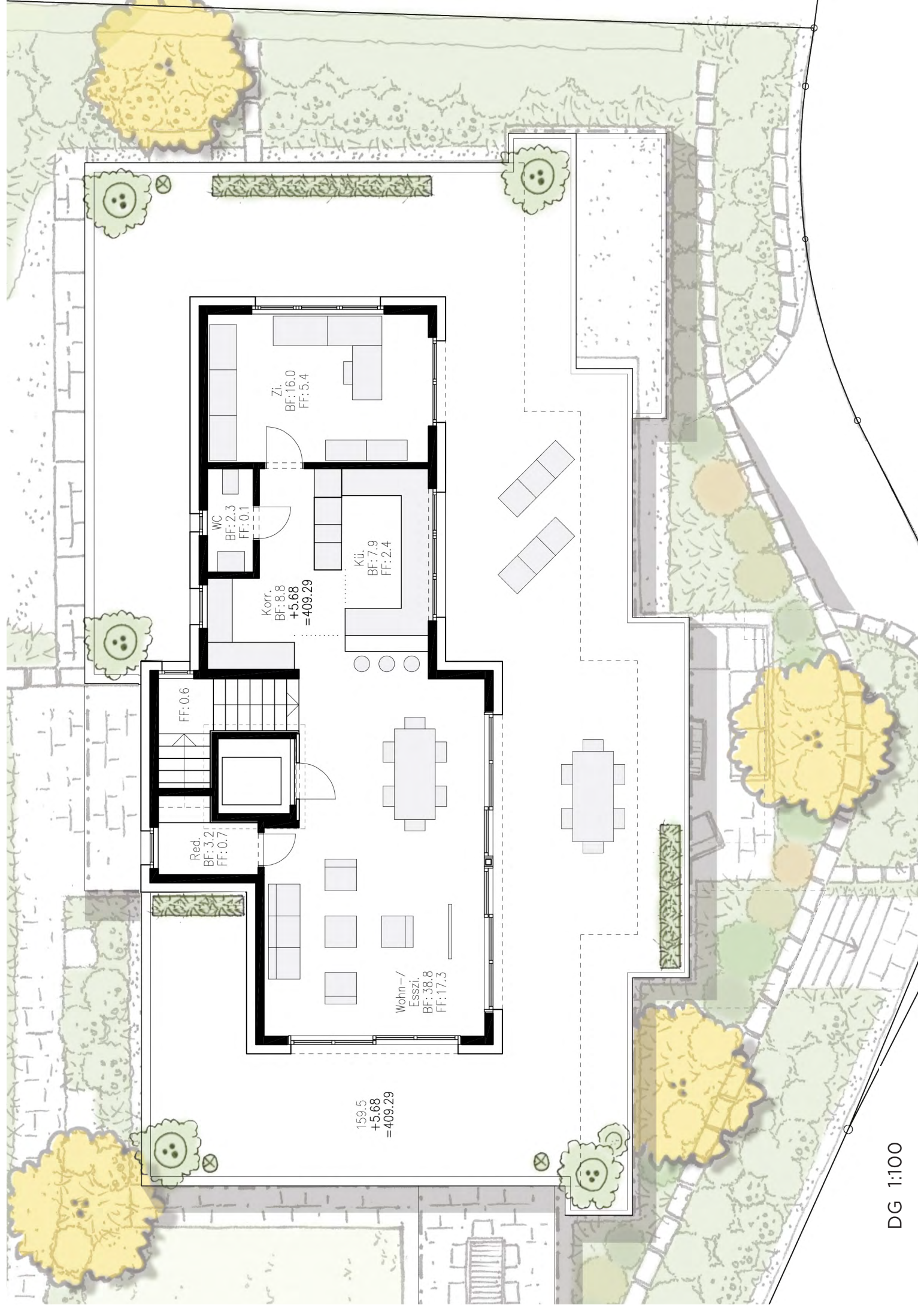


MINERGIE









159.5
+5.68
=409.29

FF: 0.6

Red.
BF: 3.2
FF: 0.7

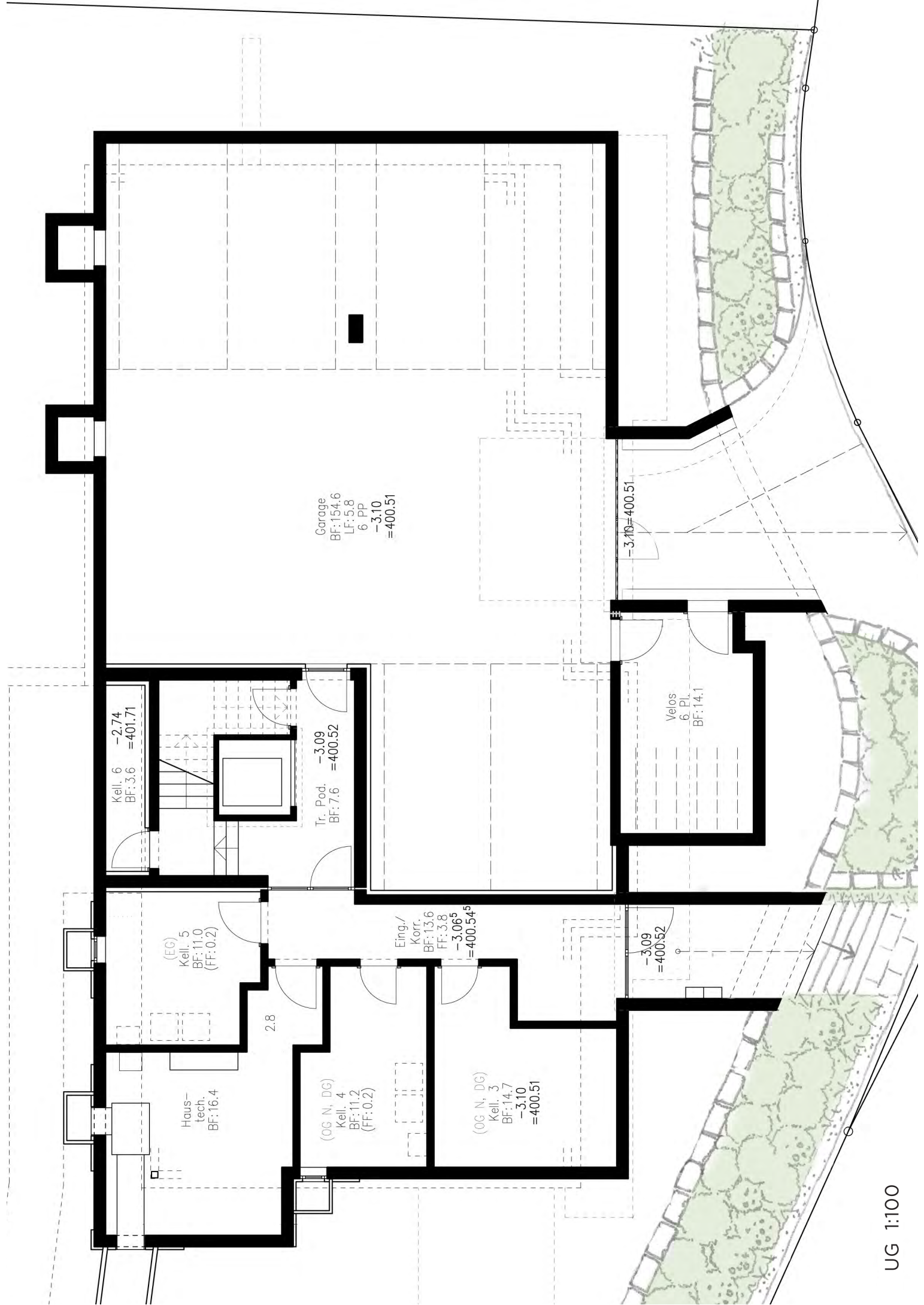
Korr.
BF: 8.8
+5.68
=409.29

WC
BF: 2.3
FF: 0.1

Kü.
BF: 7.9
FF: 2.4

Zi.
BF: 16.0
FF: 5.4

Wohn-/
Esszi.
BF: 38.8
FF: 17.3



Garage
 BF: 154.6
 LF: 5.8
 6 PP
 -3.10
 =400.51

Kell. 6
 BF: 3.6
 -2.74
 =401.71

Tr. Pod.
 BF: 7.6
 -3.09
 =400.52

Velos
 6 Pl.
 BF: 14.1

(EG)
 Kell. 5
 BF: 11.0
 (FF: 0.2)

Eing./
 Korr.
 BF: 13.6
 FF: 3.8
 -3.06⁵
 =400.54⁵

-3.09
 =400.52

Haus-
 techn.
 BF: 16.4

(OG N., DG)
 Kell. 4
 BF: 11.2
 (FF: 0.2)

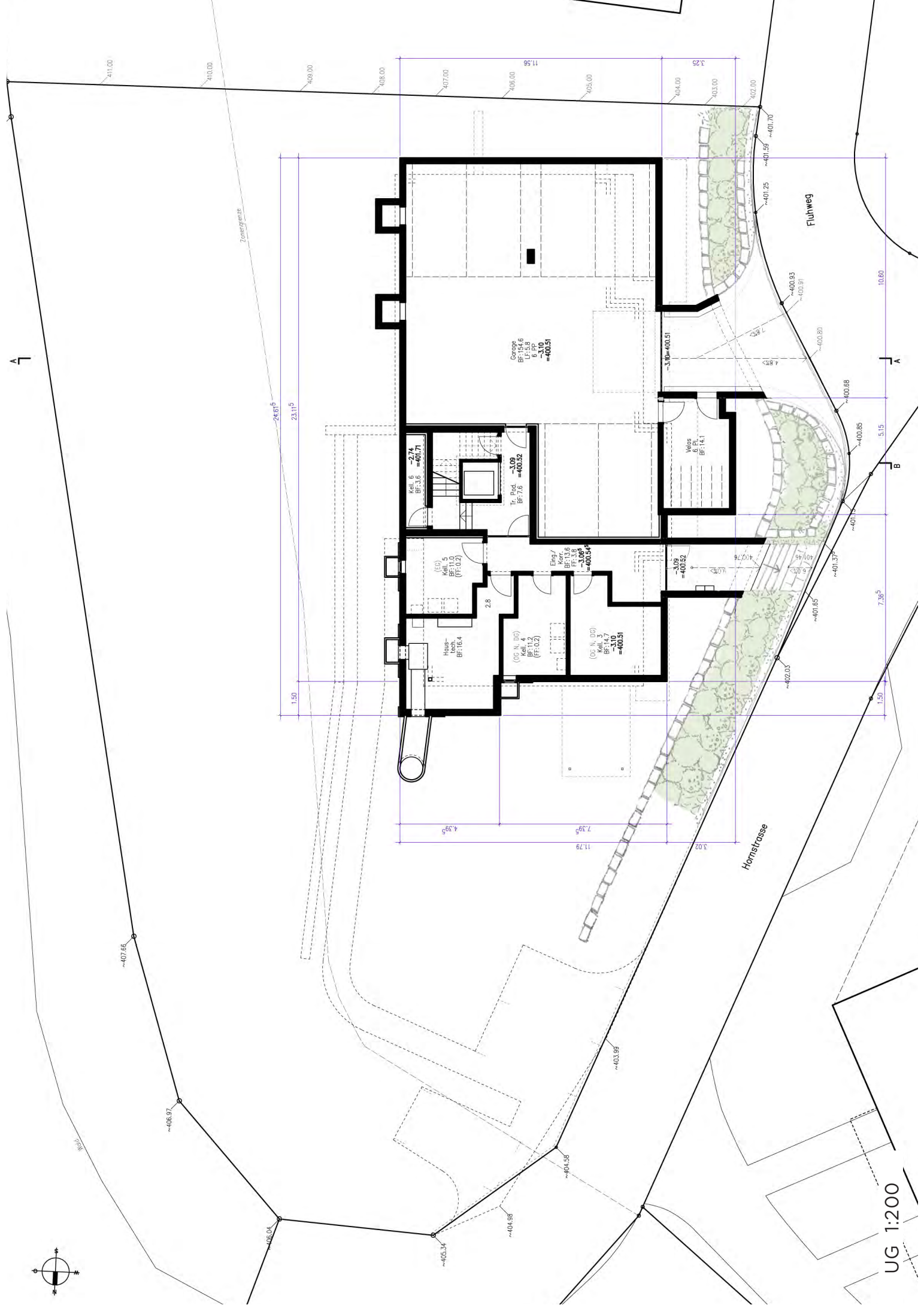
(OG N., DG)
 Kell. 3
 BF: 14.7
 -3.10
 =400.51

2.8





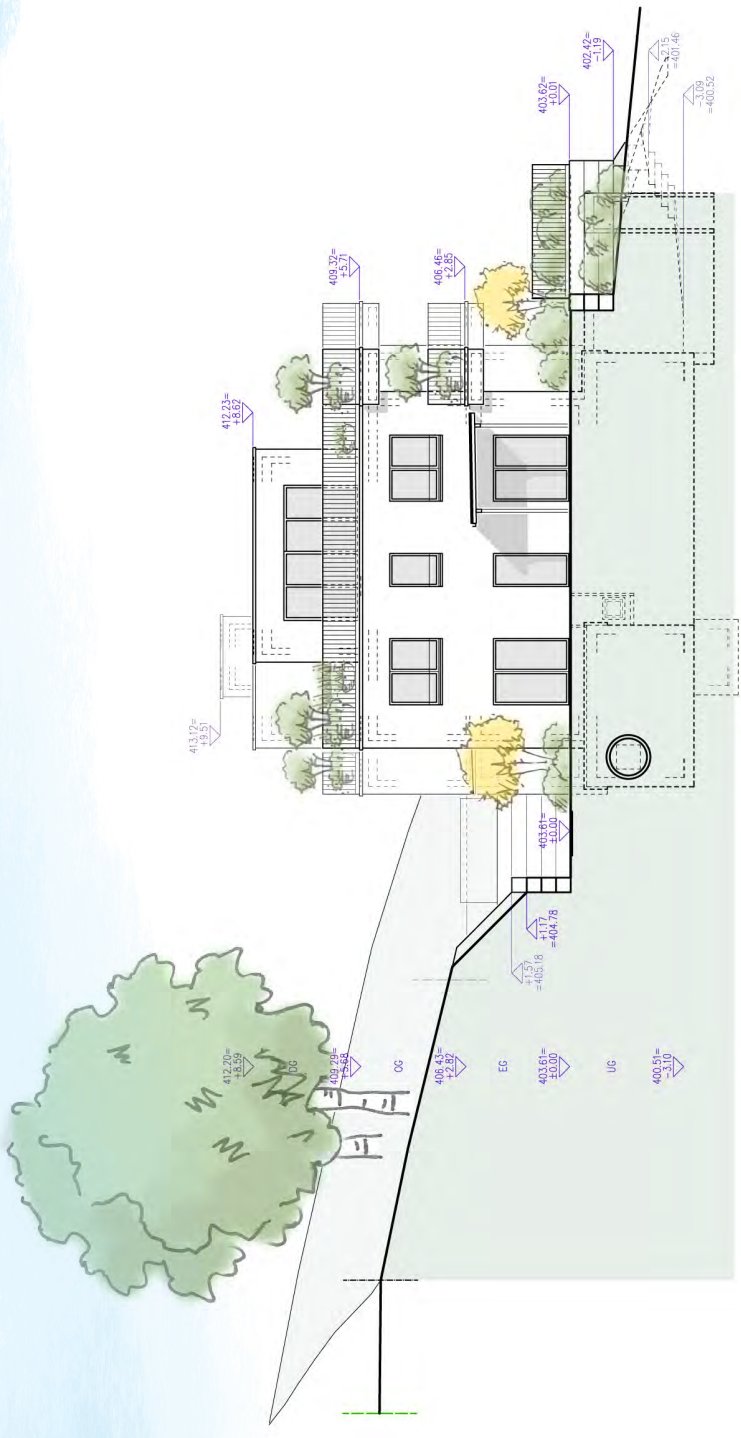
OG 1:200



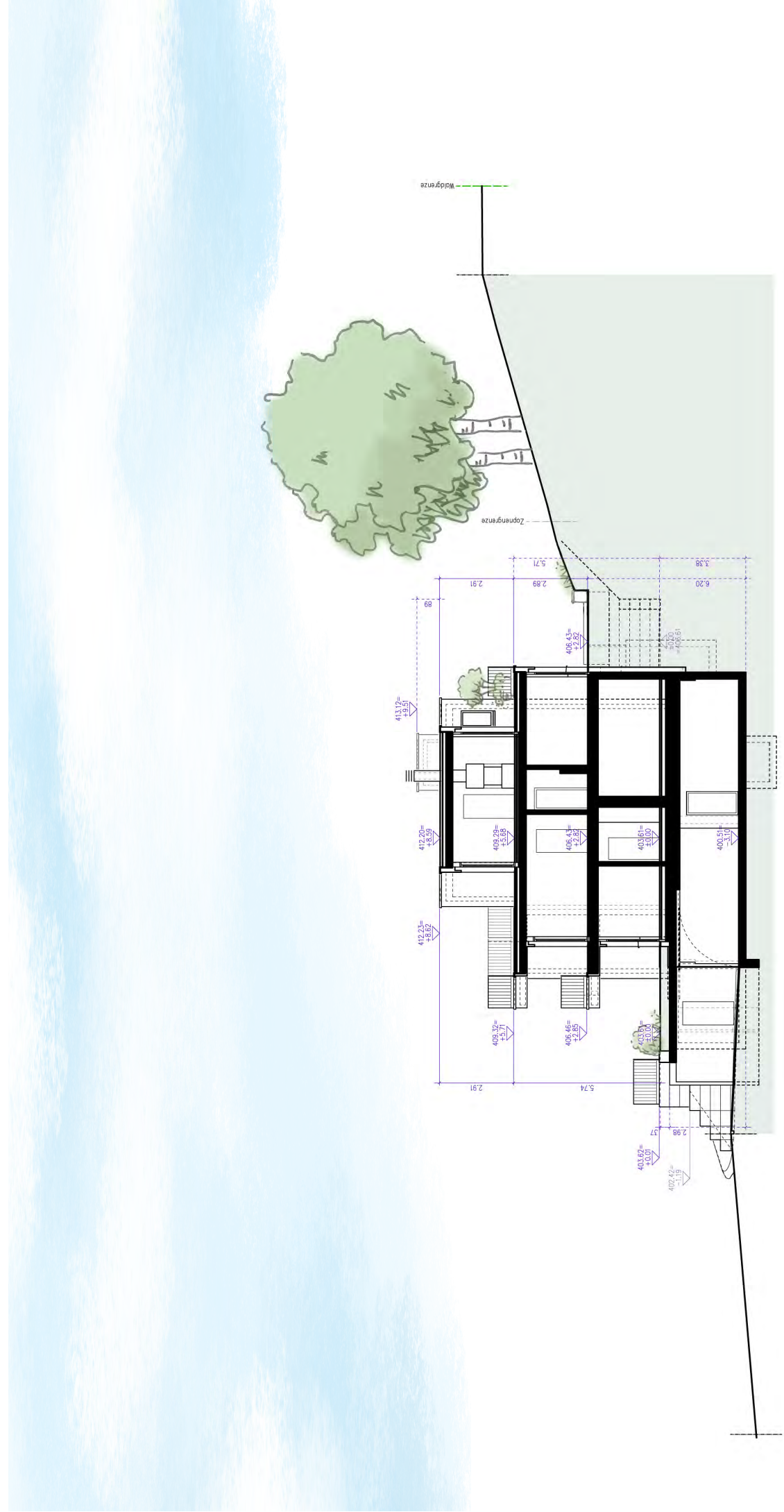
UG 1:200



Westfassade 1:100



Nordfassade 1:200



Schnitt A-A 1:200

Verkauf

STÄUBLE IMMOBILIEN GMBH

Marcel Stäuble

Haselstrasse 1

5400 Baden

Telefon 056 210 90 00

m.staeuble@staeuble-immobilien.ch

Bauherrschaft

WEIDMANN ARCHITEKTEN AG

Dorfstrasse 12

8803 Rüslikon